



3 Thurstan Street, Chelsea Creek
London SW6

GARTONJONES.COM



3 Thurstan Street, Chelsea Creek London, SW6

GARTON JONES.COM

11 Park Street
Chelsea Creek
London
SW6 2FS

Sales +44 (0) 20 7824 7090
paul@gartonjones.com
www.gartonjones.com

£850 Per Week

A beautifully presented furnished two-bedroom, two-bathroom apartment (886sq ft / 82.3 sqm) to rent in Lockside House, Chelsea Creek.

This elegant home features an open-plan reception area opening onto a private terrace with views of the communal gardens. The contemporary kitchen is finished with a marble breakfast bar and integrated appliances including induction hob, dishwasher, oven, and fridge freezer. Additional highlights include a utility cupboard with washer-dryer, ample storage, wood flooring, comfort cooling, and underfloor heating throughout.

Residents benefit from exclusive access to on-site amenities including a gym, swimming pool, spa, and 24-hour concierge. Ideally located near Imperial Wharf Overground and Fulham Broadway Underground stations, Chelsea Creek offers excellent transport links and is within easy reach of the vibrant King's Road, famed for its designer boutiques, restaurants, bars, and cafés.

****Please note that the furniture may differ to that shown in the current photos****

Council tax — London Borough Of Hammersmith & Fulham — Band G
EPC - C (80)

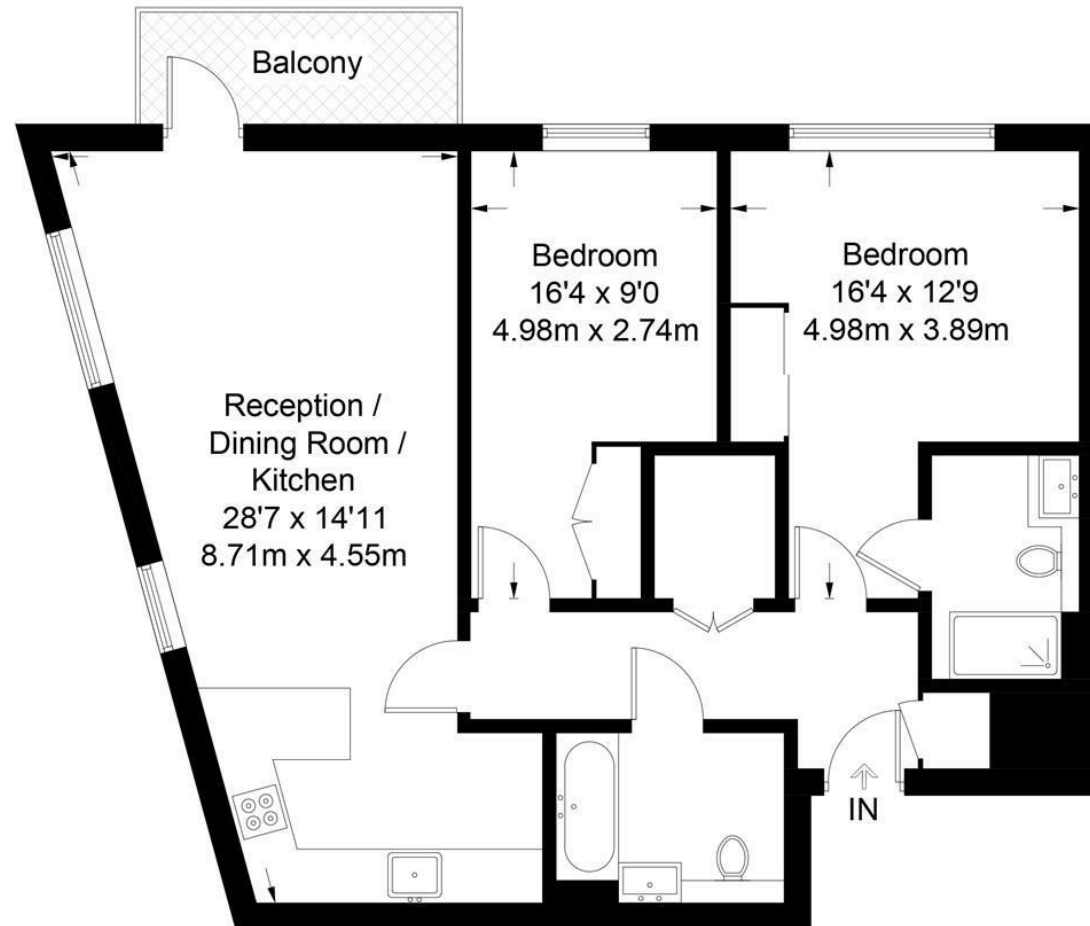
- 886 Sq.ft (82.3 Sq.m)
- 2 Double Bedrooms, 2 Luxury Bathrooms (1 En-Suite)
- Dual Aspect Open Plan Reception Room
- Kitchen with Miele Integrated Appliances
- Large Private Terrace
- Furnished
- Residents Gym with Spa Facilities & Indoor Swimming Pool
- Close to Local Shops, Bars & Restaurants
- Moments From Chelsea Harbour & Imperial Wharf Station
- EPC - C (80)



EPC certificate available on request.

Lockside House

Approximate Gross Internal Area = 886 sq ft / 82.3 sq m



Third Floor

Not to scale, for guidance only and must not be relied upon as a statement of fact.
All measurements and areas are approximate only and have been prepared in accordance with the current edition of the RICS Code of Measuring Practice.

